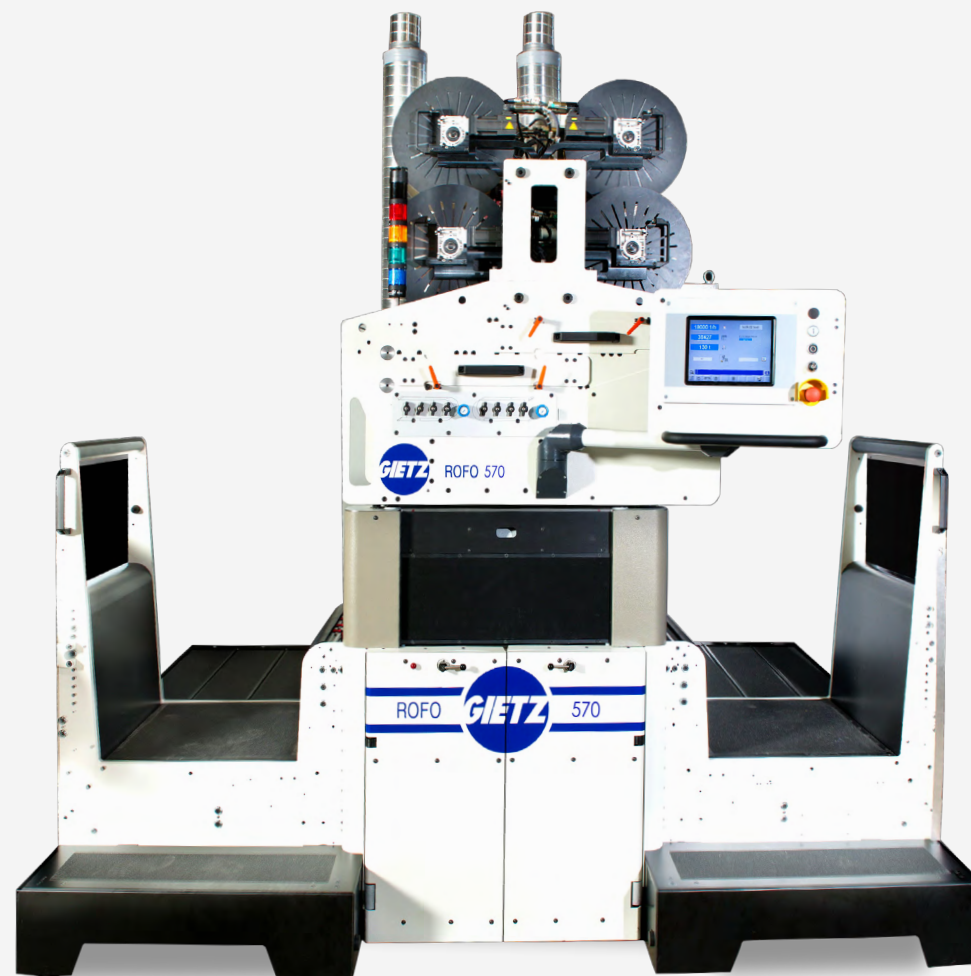




since 1892



ROFO 570

The ultimate in narrow web

ROFO 570

At a glance.

Custom-tailored solutions are possible due to the modular construction principle of the ROFO 570. It can be supplied either as an offline version including its own substrate unwind and rewind devices, or as an inline version to be integrated into all current and established narrow web printing presses. The substrate web running direction is from left to right as viewed from the operator control desk.



1. Up to 18'000 strokes/hour or 150 m/min

The Gietz ROFO 570 allows very high speeds up to 18'000 strokes/hour or up to 150 m/min / 492' /min; the final production speed depends upon the substrate and the foil, together with the printing and stamping image.

2. VACUFOIL

VACUFOIL, the high performance foil transportation system with the ability to process foil rolls with large diameter and longest foil pulls at high machine speeds leading to excellent foil saving capabilities and huge net production output.

3. Large stamping area

The Gietz ROFO 570 has a maximum stamping area of 550 x 610 mm / 21.65" x 24". This large stamping area with repeat lengths of up to 620 mm / 24.4" increases the possibilities of integration into existing systems (inline version). With both the inline and the offline version this also enables a larger range of product applications.

4. Unique stamping force

With a maximum stamping force of 130 metric tons (143 US tons) the Gietz ROFO 570 offers nearly unlimited possibilities for combination stamping foiling/embossing, embossing/debossing, flat stamping etc. Furthermore, the machine allows individual pressure settings by control columns (e.g. more pressure at operator side and less at drive side or more at press entry and less at press exit).

5. Up to 6 foil feeds

The machine can be equipped with up to 6 foil feeds. This increases the application possibilities and helps to reduce unnecessary foil consumption.

6. Rotating foiling unit

The machine is equipped with a foiling unit which can be rotated through 90 degrees, which allows foils to be run either in line with or transverse to the substrate web running direction. Furthermore, the web substrate pull lengths can be divided, allowing several stamping and/or embossing/ debossing production processes to be made in one pass.

7. Hologram application technology

For the application of positioned holograms for the security industry, Gietz is long established as a well-proven supplier of industry leading technologies.

8. Core competence and service life

For more than half a century, Gietz has focussed on foil stamping, and Gietz machines are first and foremost designed as foil stamping and embossing systems. User experiences with hundreds of machines have been consistently incorporated and integrated into their design. A Gietz is a Gietz: it foil stamps and embosses giving the highest quality, often for more than 20 years before requiring the first overhaul.

9. Price-performance ratio

The very highest stamping quality, maximum production speed, extremely long service life and reliability. A Gietz machine is well worth its price.

10. Top products for professionals

Foil stamping machines from Gietz are recognized by printers worldwide as industry leading products from professionals for professionals.



ROFO 570

Some details.

Foil web transport

- Up to 6 foil feeds on 2 unwinding levels
- The foil is unwound using the high performance VACUFOIL foil transportation system
- Suction channel frames with loop sensors to house the foil before advance
- Suction board at press entry for foil web tension control
- Air induced draft fans with aspiration pipes to generate the vacuum

Standalone or inline operation

The dedicated substrate feeding device allows for an integration in all kinds of webfed systems. An infeed and outfeed web buffering system enables perfect synchronisation to be achieved between the platen press and allows varying the infeed and outfeed substrate web speeds. The system can run with rotary, semi rotary or combination drive web presses. Also available as a standalone solution with its own substrate web unwind and rewind device or cross cutter.



Easy settings of the counterparts

- Easy setting of dies and counterparts without any disconnection of the substrate web
- Perfect make-ready possibilities underneath the counter plate
- Positioning pins align honeycomb, counter plate and make-ready plate



Large stamping area

With a maximum stamping area of 550 x 610 / 21.65" x 24" the system allows for a huge range of application possibilities and can be integrated in a wide spectrum of web fed systems.



Hologram application

- The hologram foil is unwound using the VACUFOIL foil transportation system
- The foil tension of each hologram foil web is individually adjustable
- The register mark detection happens inside the press or at the entry to the press



ROFO 570

The facts.

Technical data

- Substrate web width: max. 570 mm / 22.4"
 - Substrate weight: max. 300 g/m²
 - Substrate web advance: up to 620 mm / 24.4"
 - Stamping area: max. 550 x 610 mm / 21.65" x 24"
 - Speed: max. 150 m/min / 492'/min
Up to 18'000 strokes/h
 - Temperature: Up to 200 °C / 392 °F
 - Pressure of the press: max. 130 tons / 143 US tons
 - Foil webs: max. 6
 - Foil core diameter: 3" and 1"
 - Foil reel diameter: max. 400 mm / 15.8"
 - Foil width: max. 610 mm / 24"
- min. 200 mm / 7.87"
min. 40 g/m²
-
- **Weight and dimensions**
Weight: approx. 4.3 tons / 4.7 US tons
Base: approx. 2.72 x 1.9 m / 8.9' x 6.4'
Height: 2.88 m / 9.5'
- min. 25 mm / 1.0"
other minimum options on request

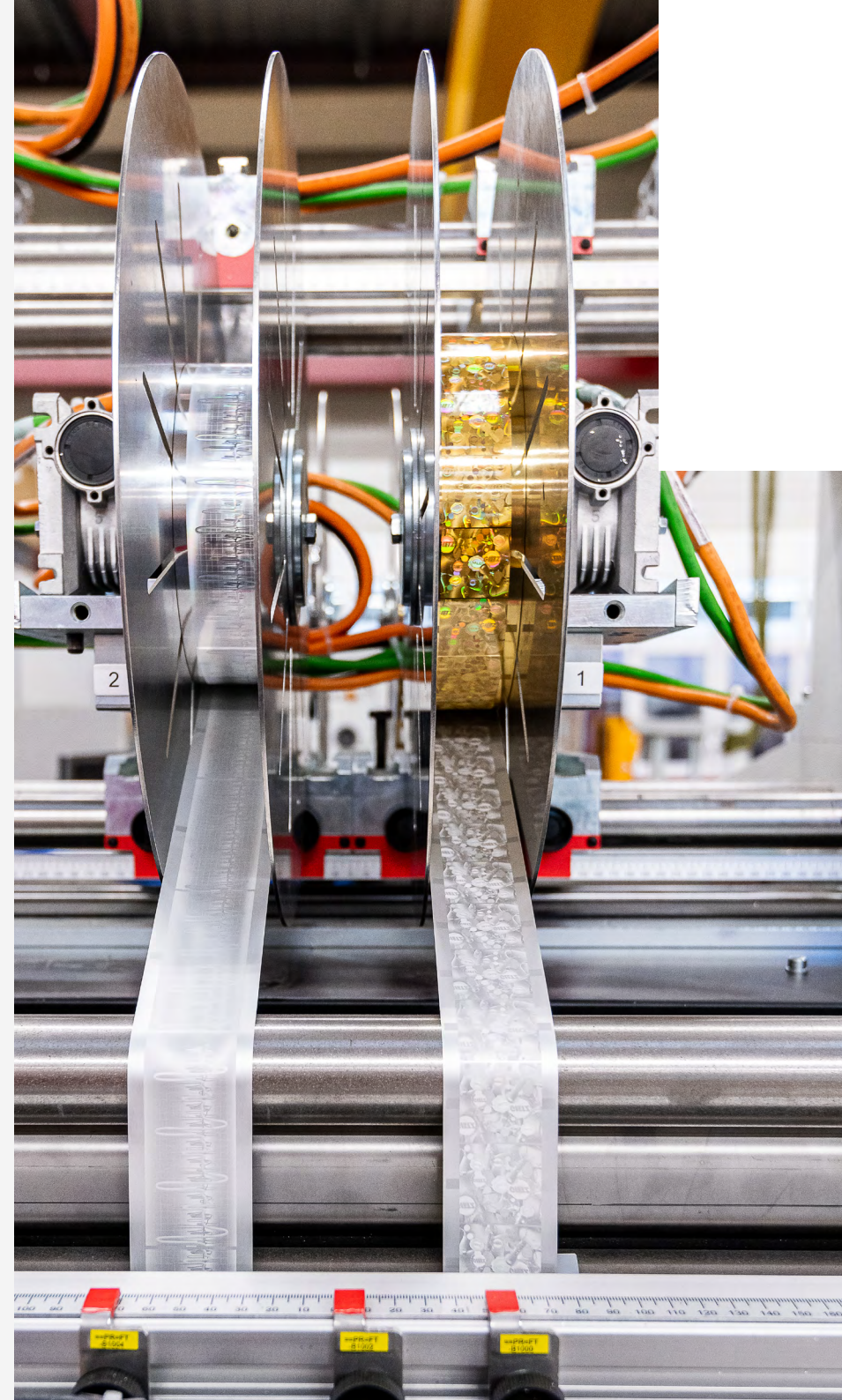


Standard equipment

- Rotating foiling unit
- VACUFOIL foil transportation system
- 1 foil feed and 2 foil webs
- Touch Screen machine control

Optional equipment

- Up to 6 foil feeds and 6 foil webs
- Inductive heating system
- Hologram equipment
- Permanent die-mounting system
- Visualization and inspection equipment



Gietz Services around the globe



Quality guarantees

All Gietz-machines are provided with guarantees for functionality and material quality. They all have a long service life. The basis for this is the solid technology, which can be relied on at all times. This is proven by the fact that, as a result of the high production reliability and the performance of the machines, numerous customers have ordered further machines after their first one.



Gietz-Service - Security in every case

In order to guarantee the highest possible availability of the machine over decades, we would recommend the consideration of a service contract. The remote service analysis is a component part of this.



Global After-Sales Service

Gietz-machines require a minimum of regular servicing, as the experience of millions of operating hours has been integrated into every machine. For this servicing, you can rely on Gietz and its international partners at all times. This is also the case for the availability of customer service, the rapid arrival of service technicians and the prompt delivery of spare parts – all of which are a matter of pride for us. More than 30,000 different items are in stock. This applies for all Gietz-machines, even if they were purchased many years ago. Service work is only carried out by technicians who have been trained in our factory in Switzerland. You can thereby rely on their specialist capabilities at all times. Gietz and its partners are always there for you, both today and tomorrow.





since 1892

Gietz AG

Mooswiesstrasse 20 | 9200 Gossau | Switzerland

+41 71 388 22 22 | info@gietz.ch | www.gietz.ch

Member of:

Arbeitskreis Prägefolien Druck e.V.

ECMA European Carton Makers Association

FSEA Foil & Specialty Effects Associations

Paperboard Packaging Council

International Currency Association