



since 1892



FSA 870 Compact

The classic

# FSA 870 Compact At a glance.

The FSA 870 Compact is used in the print finishing of folded boxes, for example in the Food area (chocolate, confectionery) or the Non-food area (cosmetics), as well as in the print finishing of printed matter (labels, book covers, greeting cards or magazines). The FSA 870 Compact is also the machine of choice for many companies in the Security industry. These Gietz machines have proved their worth over decades for the application of registered and hologram patches and non-registered hologram stripes onto banknotes, official documents and in the field of trademark protection.



## 1. Reliable, fast, precise

The FSA 870 Compact is renowned for its registration accuracy, the excellent quality of the foil stamping and high production speed.

## 2. Short change-over times

Easy access to the foils and stamping dies, which can be quickly replaced and positioned.

## 3. 150 metric tons of pressure

Maximum pressure at full production speed for the highest level of added value in the foil stamping and embossing process.

## 4. Dwell time

Due to a mature press mechanism, the dwell times under pressure of the Gietz machines remain unique. As standard, the FSA 870 Compact offers a dwell time that is 25% longer than that of our competitors. This results in lower foil stamping temperatures and less pressure is required. The dwell time can additionally be extended up to a maximum of 2.5 seconds: e.g. for deep, large surface area foiling and embossing.

## 5. Longitudinal and transverse foil feed

The foil can be fed through the machine in line with the sheet running direction, and/or transverse to it.

## 6. Foil unwinding

Diameter-controlled or externally regulated foil unwinds with pneumatic brake for 1" and 3" cores guarantee a precise and smooth foil feed.

## 7. Hologram application technology

For the application of single-picture holograms for the security industry, Gietz is long established as a well-proven supplier of industry leading technologies.

## 8. Core competence and service life

For more than half a century, Gietz has focussed on foil stamping, and Gietz machines are first and foremost designed as foil stamping and embossing systems. User experiences with hundreds of machines have been consistently incorporated and integrated into their design. A Gietz is a Gietz: it foil stamps and embosses giving the highest quality, often for more than 20 years before requiring the first overhaul.

## 9. Price-performance ratio

The very highest stamping quality, maximum production speed, extremely long service life and reliability. A Gietz machine is well worth its price.

## 10. Top products for professionals

Foil stamping machines from Gietz are recognized by printers worldwide as industry leading products from professionals for professionals.





# FSA 870 Compact

## Some details.

### ESS modification

The FSA 870 Compact gives the option for an enlarged stamping area. The runnable size sheet size then extends up to 870 x 600mm /34.3" x 23.6" for board, and 855 x 600mm /33.7" x 23.6" for paper. The enlarged stamping area of 800 x 592 mm / 31.5" x 23.3" typically allows for one additional row of dies.

### High Pile machine configuration

The FSA 870 Compact is also available in a high pile configuration, which allows folding carton manufacturers to work with deeper piles, reducing change times and increasing productivity.





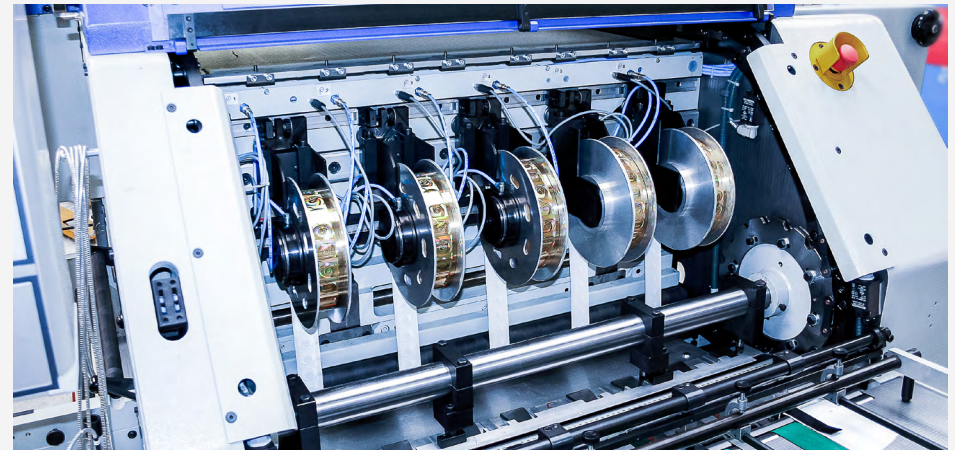
### Transverse foil feeding

- For special and demanding jobs
- The number of machine passes are reducible
- For blind embossing and foil stamping with different foil colours, one behind the other, in the sheet running direction



### Hologram application

- The foil tension of each hologram foil web is individually adjustable
- The register mark detection happens inside the press



### Die-cutting equipment

High-speed die-cutting, embossing or a combination of both is made easy, using the standard die-cutting chase and make-ready plate. This multifunctional use is a benefit of the FSA 870 Compact.



# FSA 870 Compact

## The facts.

### Technical data

- Sheet format: max. 870 x 560 mm / 34.3" x 22.0"
- ESS special format: max. 870 x 600 mm / 34.3" x 23.6"
- Material thickness: max. 2 mm / 0.08"
- Stamping area: max. 800 x 520 mm / 31.5" x 20.5"  
ESS max. 800 x 592 mm / 31.5" x 23.3"
- Speed: max. 6000 strokes/h
- Temperature up to 180 °C / 356°F by 6 individually controllable heating zones
- Pressure of the press: max. 150 tons / 165 US tons
- Foil webs: max. 6 (more on request)
- Foil core diameter: 3" and 1"
- Foil reel diameter: max. 210 mm / 8.3"
- Foil width: max. 805 mm / 31.7"
- **Pile height**
  - At feeder side: max. 1120 mm / 44.1"
  - At delivery side: max. 850 mm / 33.5"
- **Weight and dimensions**
  - Weight: approx. 8 tons / 8.8 US tons
  - Base: approx. 4.0 x 2.8 m / 13.1' x 9.2'
  - Height: 2.3 m / 7.6'

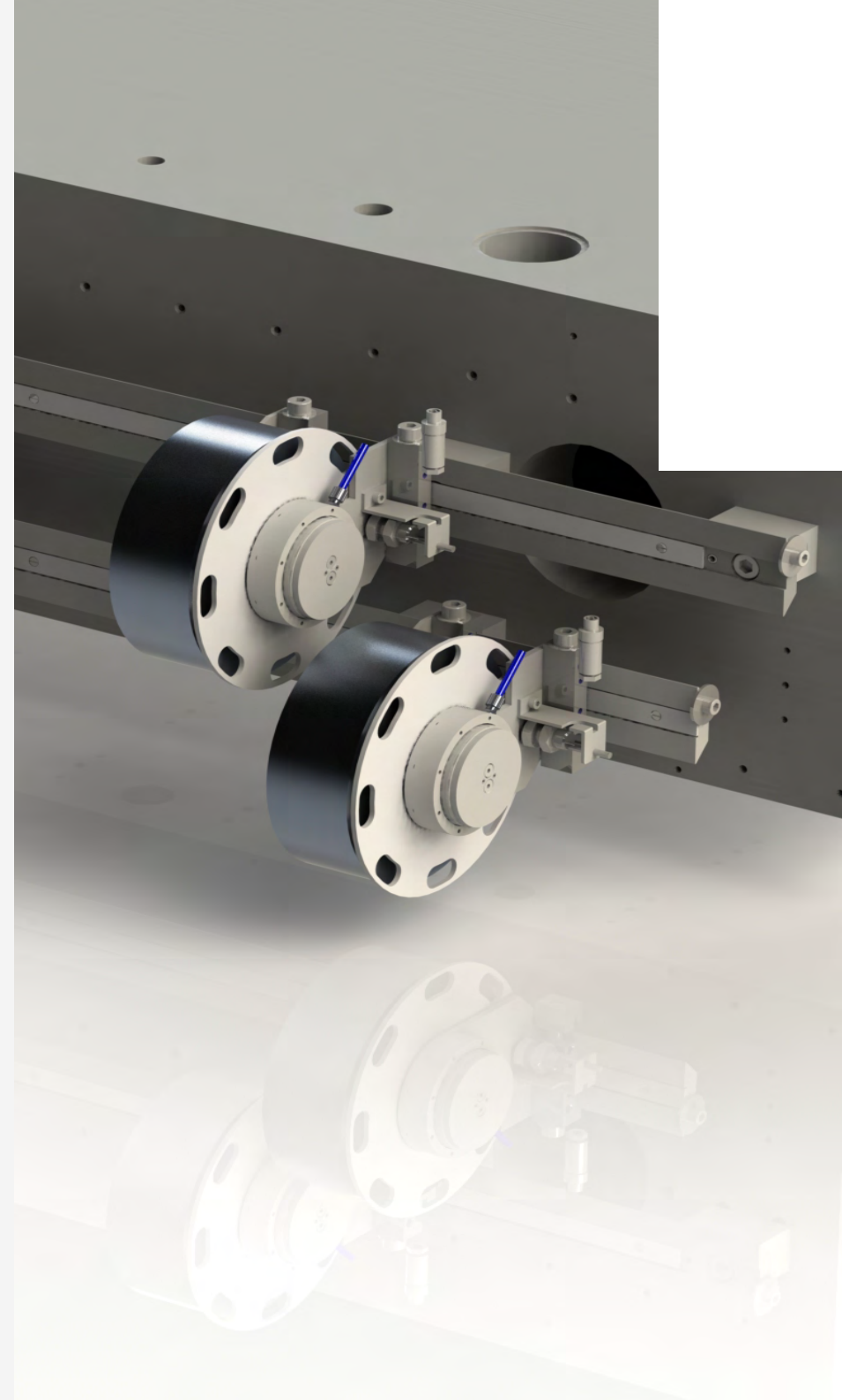


### Standard equipment

- Mabeg Feeder
- 2 longitudinal foil feeds
- Rewinder for used foils
- Touch Screen machine control
- Selectable dwell time under pressure

### Optional equipment

- Hologram equipment
- Inductive heating system
- Die-cutting equipment
- Up to 5 longitudinal and 3 transverse foil feeds
- Manufacturing Execution System





# Gietz Services around the globe



## Quality guarantees

All Gietz-machines are provided with guarantees for functionality and material quality. They all have a long service life. The basis for this is the solid technology, which can be relied on at all times. This is proven by the fact that, as a result of the high production reliability and the performance of the machines, numerous customers have ordered further machines after their first one.



## Gietz-Service - Security in every case

In order to guarantee the highest possible availability of the machine over decades, we would recommend the consideration of a service contract. The remote service analysis is a component part of this.



## Global After-Sales Service

Gietz-machines require a minimum of regular servicing, as the experience of millions of operating hours has been integrated into every machine. For this servicing, you can rely on Gietz and its international partners at all times. This is also the case for the availability of customer service, the rapid arrival of service technicians and the prompt delivery of spare parts – all of which are a matter of pride for us. More than 30,000 different items are in stock. This applies for all Gietz-machines, even if they were purchased many years ago. Service work is only carried out by technicians who have been trained in our factory in Switzerland. You can thereby rely on their specialist capabilities at all times. Gietz and its partners are always there for you, both today and tomorrow.







*since 1892*

### **Gietz AG**

Mooswiesstrasse 20 | 9200 Gossau | Switzerland

+41 71 388 22 22 | [info@gietz.ch](mailto:info@gietz.ch) | [www.gietz.ch](http://www.gietz.ch)

### **Member of:**

Arbeitskreis Prägefolien Druck e.V.

ECMA European Carton Makers Association

FSEA Foil & Specialty Effects Associations

Paperboard Packaging Council

International Currency Association