

FSA 870 Compact

The Classic.



Gietz since 1892.
From Professionals for Professionals.



FSA 870 Compact

At a glance.

The FSA 870 Compact is used in the print finishing of folded boxes, for example in the Food area (chocolate, confectionery) or the Non-food area (cosmetics), as well as in the print finishing of printed matter (labels, book covers, greeting cards or magazines). The FSA 870 Compact is also the machine of choice for many companies in the Security industry. These Gietz machines have proved their worth over decades for the application of registered and hologram patches and non-registered hologram stripes onto banknotes, official documents and in the field of trademark protection.

The 10 Advantages

1. Reliable, fast, precise

The FSA 870 Compact is renowned for its registration accuracy, the excellent quality of the foil stamping and high production speed.

2. Short change-over times

Easy access to the foils and stamping dies, which can be quickly replaced and positioned.

3. 150 metric tons of pressure

Maximum pressure at full production speed for the highest level of added value in the foil stamping and embossing process.

4. Dwell time

Due to a mature press mechanism, the dwell times under pressure of the Gietz machines remain unique. As standard, the FSA 870 Compact offers a dwell time that is 25% longer than that of our competitors. This results in lower foil stamping temperatures and less pressure is required. The dwell time can additionally be extended up to a maximum of 2.5 seconds: e.g. for deep, large surface area foiling and embossing.

5. Longitudinal and transverse foil feed

The foil can be fed through the machine in line with the sheet running direction, and/or transverse to it.

6. Foil unwinding

Diameter-controlled or externally regulated foil unwinds with pneumatic brake for 1" and 3" cores guarantee a precise and smooth foil feed.

7. Hologram application technology

For the application of single-picture holograms for the security industry, Gietz is long established as a well-proven supplier of industry leading technologies.

8. Core competence and service life

Since more than half a century, Gietz has focussed on foil stamping, and Gietz machines are first and foremost designed as foil stamping and embossing systems. User experiences with hundreds of machines have been consistently incorporated and integrated into their design. A Gietz is a Gietz: it foil stamps and embosses giving the highest quality, often for more than 20 years before requiring the first overhaul.

9. Price-performance ratio

The very highest stamping quality, maximum production speed, extremely long service life and reliability. A Gietz machine is well worth its price.

10. Top products for professionals

Foil stamping machines from Gietz are recognized by printers worldwide as industry leading products from professionals for professionals.

FSA 870 Compact

Some details.

ESS modification

The FSA 870 Compact is available as standard machine or with an enlarged stamping area. The runnable sheet size is extended up to 870 x 600 mm / 34.3" x 23.6" for board, and 855 x 600 mm / 33.7" x 23.6" for paper. The enlarged stamping area of 800 x 592 mm / 31.5" x 23.3" allows for one additional row of dies to be added.



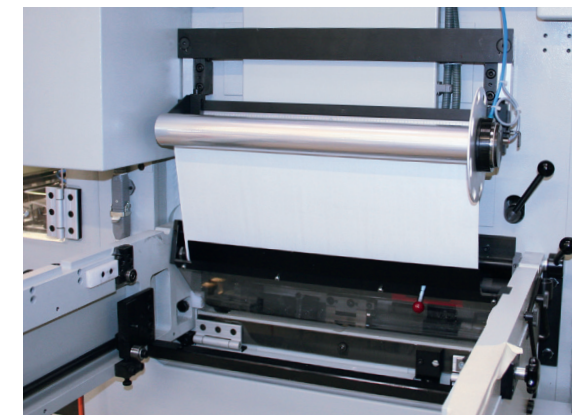
Inductive heating system

As an option, the conventional heating can be replaced by an inductive heating system. It allows for a heating energy consumption saving of up to 35%. The heating only starts when the honeycomb base is locked into position.



Transverse foil feeding

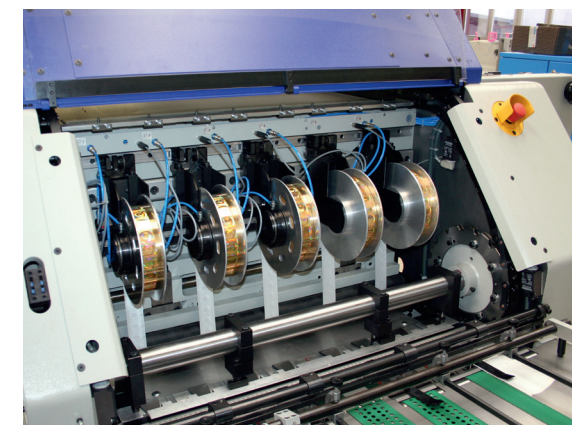
For particularly demanding jobs, transverse foil feeding allows flexibility of machine set ups and the number of machine passes may be reduced; e.g. blind embossing and foil stamping by different foil colours, one behind the other, in the sheet running direction.



Hologram application

Up to 5 foil feeds and therefore up to 5 registered hologram webs available. The register mark detection happens inside the press and the foil web can be easily adjusted by a lateral fine adjustment device. This system enables excellent positional accuracy to be achieved.

Unregistered stripe applications, for example for tax stamps, can be run by a wider foil roll in either longitudinal or transverse direction according to the sheet layout.



FSA 870 Compact

The facts.

Technical data

- Sheet format:
max. 870 x 560 mm / 34.3" x 22.0"
min. 280 x 210 mm / 11.0" x 8.3"
- ESS special format:
max. 870 x 600 mm / 34.3" x 23.6"
- Material thickness:
max. 2 mm / 0.08"
min. approx. 70 g/m² / 0.003"
- Stamping area: max. 800 x 520 mm / 31.5" x 20.5"
ESS max. 800 x 592 mm / 31.5" x 23.3"
- Speed: max. 6000 strokes/h
- Temperature up to 180 °C / 356°F by 6 individually controllable heating zones
- Pressure of the press: max. 150 tons / 165 US tons
- Foil webs: max. 6 (more on request)
- Foil core diameter: 3" and 1"
- Foil reel diameter: max. 210 mm / 8.3"
- Foil width:
max. 805 mm / 31.7"
min. 25 mm / 1.0"
- Pile height
At feeder side: max. 1120 mm / 44.1"
At delivery side: max. 850 mm / 33.5"
- Weight and dimensions
Weight: approx. 8 tons / 8.8 US tons
Base: approx. 4.0 x 2.8 m / 13.1" x 9.2"
Height: 2.3 m / 7.6"

Standard equipment

- Mabeg Feeder
- 2 longitudinal foil feeds
- Rewinder for used foils
- Touch Screen machine control
- Selectable dwell time under pressure

Optional equipment

- Hologram equipment
- Inductive heating system
- Die-cutting equipment
- Up to 5 longitudinal and 3 transverse foil feeds
- Manufacturing Execution System

Gietz Services around the globe



Quality guarantees

All Gietz-machines are provided with guarantees for functionality and material quality. They all have a long service life. The basis for this is the solid technology, which can be relied on at all times. This is proven by the fact that, as a result of the high production reliability and the performance of the machines, numerous customers have ordered further machines after their first one.



Gietz-Service – Security in every case

In order to guarantee the highest possible availability of the machine over decades, we would recommend the consideration of a service contract. The remote service analysis is a component part of this.



Global After-Sales Service

Gietz-machines require a minimum of regular servicing, as the experience of millions of operating hours has been integrated into every machine. For this servicing, you can rely on Gietz and its international partners at all times. This is also the case for the availability of customer service, the rapid arrival of service technicians and the prompt delivery of spare parts – all of which are a matter of pride for us. More than 30,000 different items are in stock. This applies for all Gietz-machines, even if they were purchased many years ago. Service work is only carried out by technicians who have been trained in our factory in Switzerland. You can thereby rely on their specialist capabilities at all times. Gietz and its partners are always there for you, both today and tomorrow.

